

# Introducing our new Pent roof system

***Is this the best Pent roof on the garage market ?***



PRODUCT NEWS—PRODUCTS NEWS—PRODUCT NEWS—PRODUCT NEWS

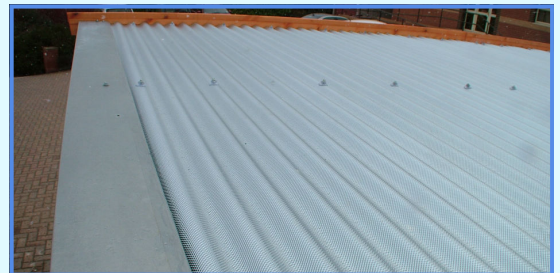
# Lidget Concrete Ltd

## Features and Benefits:

- ◆ *British made 3" profile galvanized corrugated steel ultra roof sheets, with Grafo-Therm treated underside to eliminate condensation and provide an attractive internal finish*
- ◆ *Grafo-Therm increases light reflection and decreases both reverberating sound and solar heat gain*
- ◆ *All new galvanized channel-section trusses for increased strength, durability, longevity and appearance*
- ◆ *Full-length sheets fitted to all Pent buildings up to 20'3" long*
- ◆ *Profiled foam eaves fillers fitted to front and rear on all Pent buildings to prevent wind, rain and debris ingress*
- ◆ *Specially profiled galvanised steel wrap-around flashings fitted to timber verge boards*
- ◆ *For PVC models, we fit fully-formed PVC angle verge boards*
- ◆ *Secure fit-for-purpose roofing system fully screwed with rust-proof fixings*
- ◆ *Most comprehensive range of lengths and widths available on the garage market*

**NEW FOR 2010**  
**Grafo-Therm**

**THIS IS NOW STANDARD ON ALL PENT MODELS**



**LIDGET CONCRETE LTD**

The nation's favourite garage company

[www.lidget.co.uk](http://www.lidget.co.uk)

**NEW FOR FEBRUARY 2010**

