

**Robinsons**

Established 1947



The Robinsons *Victorian* Collection

# VICTORIAN INSPIRED ELEGANCE

Designed and built to the highest standards, this select range of Robinsons Victorian greenhouses combines practicality with Victorian inspired elegance. A Robinsons Victorian will enhance any outdoor setting and you can be confident that its enduring quality will provide you with a superior growing environment for years to come.

Whether you're an enthusiastic hobbyist or a seasoned gardener, you will appreciate the generous head room offered by the steeply-pitched roofline, as well as the exceptional ventilation provided by automatically opening side and roof vents that promote the health and yield of your plants.

The distinguished good looks of the Robinsons Victorian are enhanced with attractive spandrels to the eaves and ridge as well as ridge crestring and finials that provide the essential finishing touches.

Choose the Robinsons Victorian to suit your requirements from a choice of three colours, three widths and numerous lengths, with various staging and shelving options. Your Victorian greenhouse will be delivered and fitted by our installers onto a ready-prepared 600mm high dwarf wall. To get the ball rolling, discuss your requirements with your local Robinsons Victorian retailer today. Visit [www.robinsonsvictorian.co.uk](http://www.robinsonsvictorian.co.uk) for details.



Robinsons Victorian 6' 6½" (1.99m) wide and 8' 8" (2.64m) long in green powder coated aluminium finish.

## Robinsons Victorian greenhouses include:

- Elegant spandrels at eaves and ridge
- Automatically opening side & roof vents using high quality Bayliss 3-spring openers.
- Attractive ridge crestring and finials
- Hinged single or double doors (depending on greenhouse width)
- Powder coated aluminium finish in a choice of 3 colours
- Integral guttering and downpipes to both sides
- Toughened safety glass used throughout for peace of mind
- Delivery & Installation onto a pre-prepared dwarf wall (2' / 0.60m high wall to be built by others)

## Our guarantee, your peace of mind

Our sturdy aluminium greenhouses are virtually maintenance-free and all come with a FREE 10 year framework guarantee.

Robinsons Victorian greenhouses are on display at a select network of Robinsons retailers, where you can also get advice on the best model for your requirements and make arrangements if you need your site prepared.



# FINER DETAILS



## Staging & Shelving (Aluminium)

Designed to complement the finish of your Victorian greenhouse, aluminium staging and shelving is durable and virtually maintenance-free.



## Staging & Shelving (Timber)

Our durable, tanalised timber staging and shelving provides a natural look and feel within your greenhouse.



## Double Doors

Supplied with the 8'7" and 10'7" wide models, these double doors have a clear opening width of 3' 8", enabling easier access for wheelbarrows and wheelchairs.



## Automatic Openers

Ventilation for healthier plants is provided by automatically opening side and roof vents using high quality Bayliss 3-spring automatic openers.



## Spandrels at eaves and ridge

Offering integral support at the eaves and ridge, these elegant spandrels look great and contribute to the overall strength and rigidity of your greenhouse.



## Ridge Cresting & Finials

Our Victorian style crestring and finials provide the perfect finishing touches to your greenhouse.

Front cover image: Robinsons Victorian 10' 7" (3.23m) wide and 12' 9" (3.88m) long in light ivory powder coated aluminium finish.

# SIZES

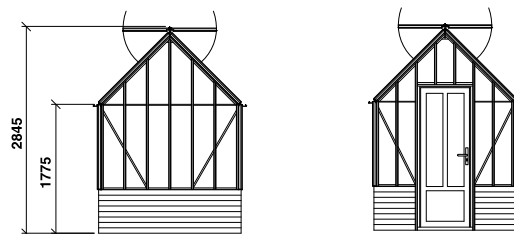
The Victorian Greenhouse is available in three widths and many lengths

**Robinsons**

Established 1947

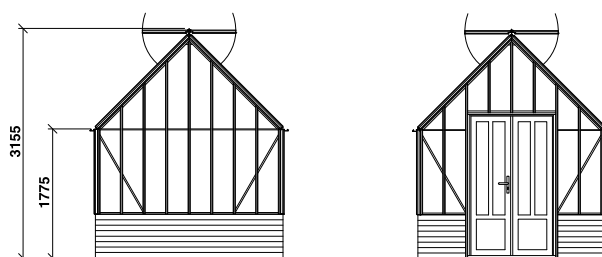
## 6' 6½" (1.99m) WIDE

<b>Eaves Height</b>	5'10" (1.78m)
<b>Ridge Height</b>	9'4" (2.85m)
<b>Door</b>	Single Door opening inwards with handle & key. Clear opening is 2' 3" (0.68m) by 6' 5" (1.97m).



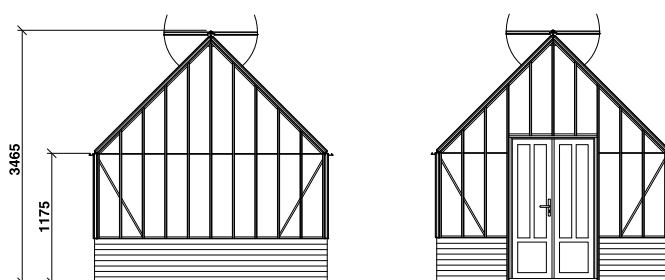
## 8' 7" (2.61m) WIDE

<b>Eaves Height</b>	5' 10" (1.78m)
<b>Ridge Height</b>	10' 4" (3.16m)
<b>Door</b>	Double Doors opening inwards with handle & key. Clear opening is 3' 9" (1.14m) by 6' 5" (1.97m).



## 10' 7" (3.23m) WIDE

<b>Eaves Height</b>	5' 10" (1.78m)
<b>Ridge Height</b>	11' 4" (3.46m)
<b>Door</b>	Double Doors opening inwards with handle & key. Clear opening is 3' 9" (1.14m) by 6' 5" (1.97m).



Robinsons Victorian 10' 7" (3.23m) wide and 12' 9" (3.88m) long in light ivory powder coated aluminium finish.

Standard Lengths	Automatic Roof Vents	Automatic Side Vents
6' 7 3/4" (2.02m)	2	2
8' 8" (2.64m)	4	4
10' 8 1/2" (3.26m)	4	4
12' 9" (3.88m)	6	6

Additional lengths available increasing in approx 2' (0.61m) intervals.

**Robinsons Greenhouses, Station Works, Fenny Compton, Southam CV47 2XB**

**t:** 01295 770717    **e:** sales@robinsonsgreenhouses.co.uk  
**f:** 01295 770819    **w:** robinsonsvictorian.co.uk

Robinsons Greenhouses is a trading division of Marshalls Mono Ltd, a company registered in England and Wales under registration number 509579.

Registered office: Birkby Grange, Birkby Hall Road, Huddersfield HD2 2YA.

Our policy is one of constant development. We therefore reserve the right to make amendments to specifications and/or price without notice. Photographs in this brochure are actual customer installations; the colour of the building is a result of the film used, daylight conditions and angles taken. Variations of colour are caused by a combination of these factors.